



Forest Joinery

Portfolio



Index

03	Index	
04	Services	
05	Design	
06	Uncommon	20 One Crown Place
08	Snowflake	22 Huckletree - PH
10	Planet	24 Stranger & Stranger
12	Hanover	26 Tri Centre One
14	Self Portrait	28 Axa Healthcare
16	NYK	30 Harbert
18	DFS & Sofology	
32	About Us	



Services

We design, manufacture & install bespoke joinery for projects throughout the UK

With over 20 years of experience in the industry, it's no wonder we're the preferred joinery supplier for clients managing high-end commercial projects across the UK. From a diverse portfolio of successful projects to state-of-the-art machinery and a dedicated, skilled team, we are fully prepared to meet any challenge our clients present.

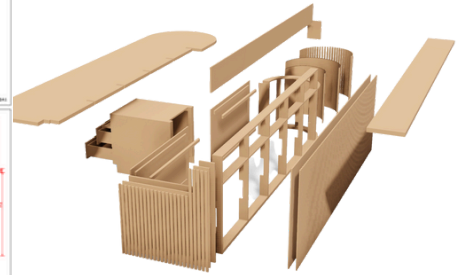
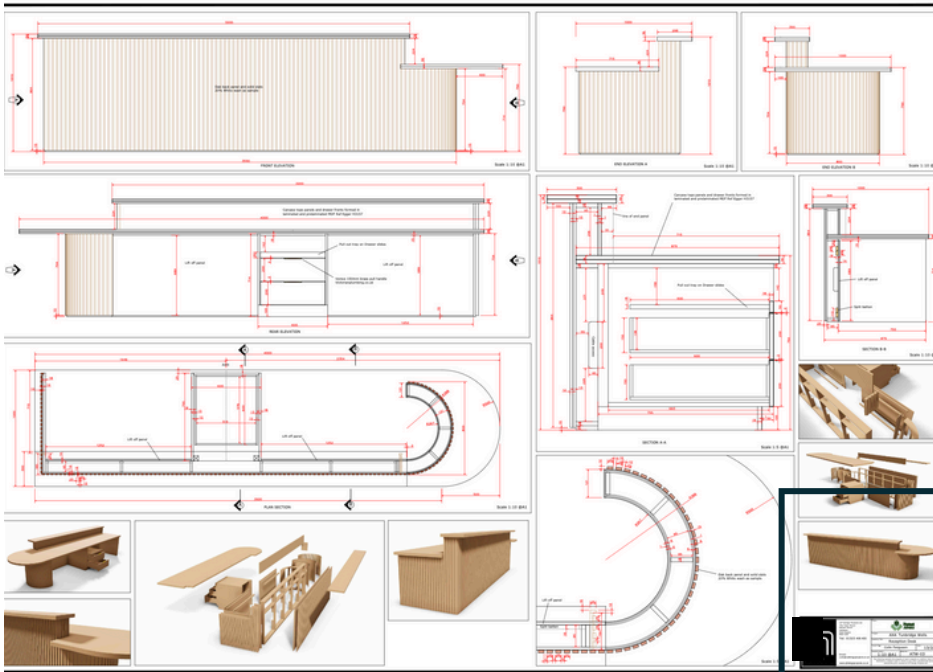
We collaborate closely with leading fit-out companies, interior designers, and project managers, always striving to build long-lasting partnerships. Our goal is to become their most trusted supplier, consistently delivering on all their bespoke joinery needs..

At Forest Joinery, we take pride in transforming your ideas into reality with precision, attention to detail, and passion. From concept to completion, we ensure a seamless, effortless process. Whether it's workspace tea points, feature walls, banquette seating, or more, we help your commercial space evolve into a perfectly tailored fit for your business.

Our commitment to innovative design and forward-thinking solutions has fueled Forest Joinery's remarkable growth, earning us a place among the industry's leading names. It's this dedication that sets us apart and allows us to continuously deliver exceptional results.

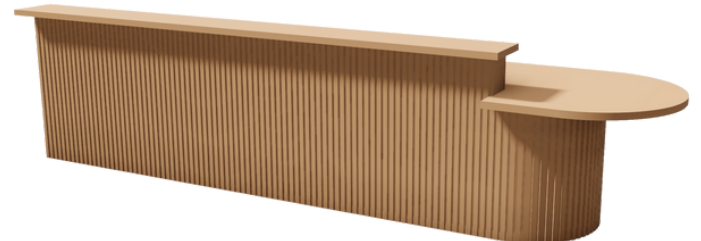


Design



As a company, we are committed to making the everyday exceptional—for our clients and especially when it comes to design. With some of the best designers in the industry, we develop shop drawings and work closely with our client to be creative in design development solutions along with visualisations and concepts to bring your space to life and achieve your business ambitions if required.

We are aware of the latest trends and commercial designs, our approach to problem solving is based on decades of experience. We take on all our client's requests & desires, but also perfectly balance this with guiding and directing our clients in the best direction to reach their goals effortlessly & seamlessly. Together, we are focused on delivering inspiring and empowering commercial fit-out projects, all the while ensuring you feel cared for and confident.



Uncommon Creative Studio - Clerkenwell

Location: Clerkenwell
Timeframe: 10 weeks

Project Overview

Uncommon Creative Studio, a leading agency known for its bold and innovative designs, entrusted us with the task of transforming their new five-floor office in Clerkenwell. The goal was to create a workspace that embodied their creativity and high standards while offering functional and stylish joinery solutions. Over 10 weeks, our team crafted custom pieces, from reception areas and workstations to a standout library with a secret door, elevating both the design and functionality of the space.

Favourite Moment

The library's manufacturing and installation was a standout moment for the team. The modular shelving, integrated lighting, and secret door combined artistry and precision, creating a striking yet functional space for the studio.

Challenges Faced

The most challenging aspect was designing and manufacturing the secret library door. Ensuring it seamlessly blended into the shelving while maintaining full functionality required innovative problem-solving and technical precision.





Final Thoughts

This project represents our largest joinery effort to date, spanning five floors of custom designs. We are proud of how the workspace captures Uncommon Creative Studio's bold and creative spirit while offering practical, high-quality solutions. This project showcases our expertise in blending functionality with imaginative design, resulting in a dynamic and inspiring office environment.



Snowflake

Location: 3 Crown Place,
London EC2A 4EB
Timeframe: 20 weeks

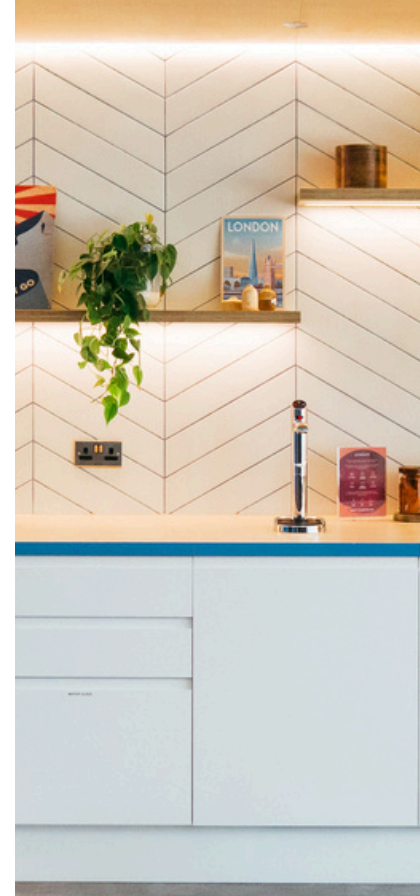
Project Overview

Snowflake, a leading cloud-based data platform, sought the creation of a dynamic and visually stunning office space for their London headquarters at 3 Crown Place. The project spanned multiple floors and featured bespoke joinery and solid surface installations, all reflecting Snowflake's cutting-edge innovation and bold design vision.

The centerpiece of the project was the reception desk, designed to emulate the form of a snowflake, with sharp lines and intricate detailing. This half-ton desk, along with tea points, boardroom cabinetry, and custom storage solutions, required precision craftsmanship and creative problem-solving to achieve a seamless, functional, and visually striking space.

Favourite Moment

Our favourite part of this project was undoubtedly the reception desk, designed to resemble a snowflake. Its sharp, geometric lines and intricate 3D profile brought the Snowflake brand to life. Watching this complex design come together, from concept to installation, was incredibly rewarding, as it became a true centrepiece of the office.



Challenges Faced

The most challenging aspect of the project was the fabrication of the solid surface reception desk. The desk's size, weight, and intricate design made the manufacturing process demanding, requiring both technical expertise and precision. Transporting and installing the half-ton desk in the main reception area was a logistical challenge, but the end result was well worth the effort.

Final Thoughts

We were amazed by the colourful and dynamic outcome of the Snowflake project. The bold design choices, including the snowflake-inspired reception desk, vibrant tea points, and freestanding booth, created a space that truly embodies the innovative spirit of Snowflake. This project pushed the limits of craftsmanship and design, resulting in a visually striking and functional office environment that Snowflake can be proud of.



Planet

Location: Tottenham Court Road

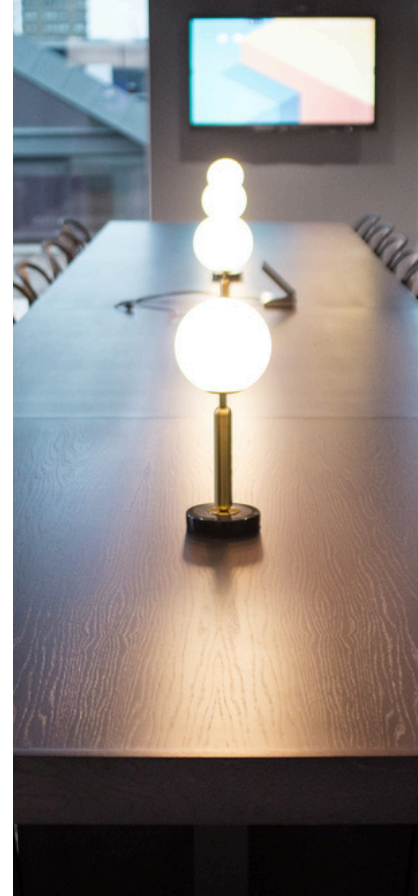
Timeframe: 16 weeks

Project Overview

Planet, a dynamic and forward-thinking company, enlisted our team to fit out their new 4th-floor office space located across from Tottenham Court Station. The goal was to create a modern, functional workspace that combined stylish aesthetics with high-performance functionality. The project required a quick turnaround, and the fit-out was completed within a compressed 16-week timeframe. From a custom-built bar area to serpentine seating and bespoke bleacher seating, every aspect of the space was tailored to Planet's unique needs, resulting in a visually striking and efficient workspace.

Favourite Moment

Our favourite element of this project was undoubtedly the booth seating. The flowing serpentine design, paired with the lush planter features and integrated lighting, created a harmonious and visually stunning seating area. It perfectly balanced style and comfort, offering both form and function to the office's social and collaborative spaces.





Challenges Faced

The most challenging aspect of this project was the tight timeframe. The programme became compressed, requiring our team to manage a rapid turnaround without compromising on quality. Coordinating the manufacturing and installation of custom elements like the curved bar and serpentine seating within a reduced programme was a demanding task, but our team's dedication ensured that everything was completed to the highest standard.

Final Thoughts

We're thrilled with the outcome of the Planet Tottenham Court Road project. The compressed timeline didn't diminish the quality or craftsmanship, and the finished space looks amazing. From the floating bar to the serpentine seating and bold boardroom furniture, every piece was carefully designed and executed to create a cohesive and functional office environment that Planet can be proud of.

Hanover Floors

Location: Mayfair

Timeframe: 6 weeks

Project Overview

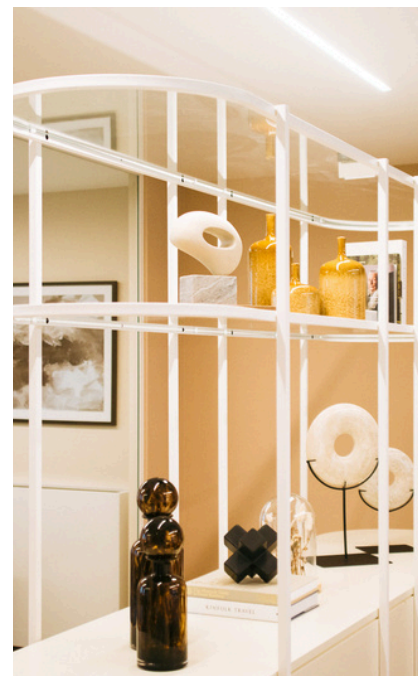
Located in the heart of bustling Mayfair, this office project on Hanover Street was a fast-paced, six-week fit-out across multiple floors. Our goal was to create a sophisticated and calming workspace that contrasts the frenetic pace of the surrounding city. With bespoke design elements and high-end finishes, the project involved creating functional yet visually stunning areas, including reception spaces, room dividers, and tea points, all executed with a refined aesthetic. Despite challenges such as a leaking roof due to ongoing building works, the final result was a seamless transformation of the floors from blueprint to reality.

Favourite Moment

Our favourite piece from the project was the tea point on the 7th floor. Its combination of floating oak storage, stainless steel detailing, and bold solid surface worktop created a harmonious blend of form and function. The understated elegance of this area was a true highlight for the team.

Challenges Faced

The most significant challenge we encountered was dealing with the building's leaking roof, caused by landlord renovations. Managing this issue while staying on schedule and ensuring the integrity of our installations was a logistical challenge, but we were able to mitigate its impact and continue delivering the project without delays.



Final Thoughts

Seeing the multiple floors come to life from the original blueprint schemes was incredibly rewarding. Despite the tight six-week timeframe and external challenges, the final result exceeded expectations, with each floor showcasing a balance of tranquillity, sophistication, and functionality. The Hanover project stands as a testament to our ability to deliver high-end finishes and bespoke designs under pressure, ensuring a refined office space that meets the client's vision.



Self Portrait - Head Office & Store

Location: Kings Road (Shop) &
Clerkenwell (Office)

Timeframe: 8 weeks

Project Overview

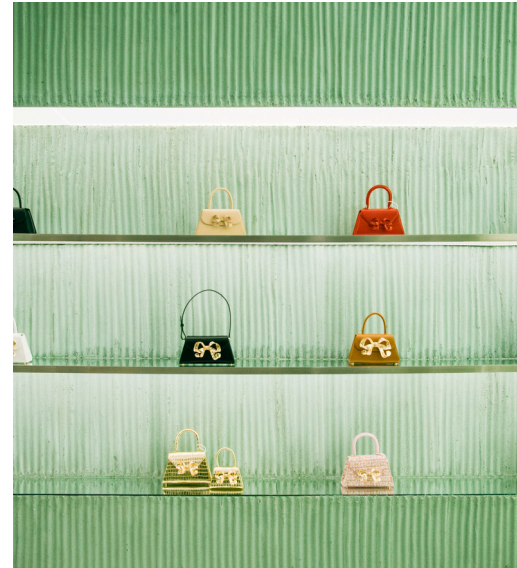
Self-Portrait, a renowned female fashion brand, tasked us with transforming their new office and flagship store in London into sleek, modern spaces that reflect their high-end design ethos. This 8-week project involved a dual fit-out, each location tailored to the brand's aesthetic, with a mix of industrial and contemporary finishes. From custom cabinetry for storing fashion designs in the office to high-end, textured finishes in the store, the project came together with striking results. Despite the complexities of the metalwork, especially for the store, we were proud to complete the project, playing a part in this thriving and globally recognized fashion brand's journey.

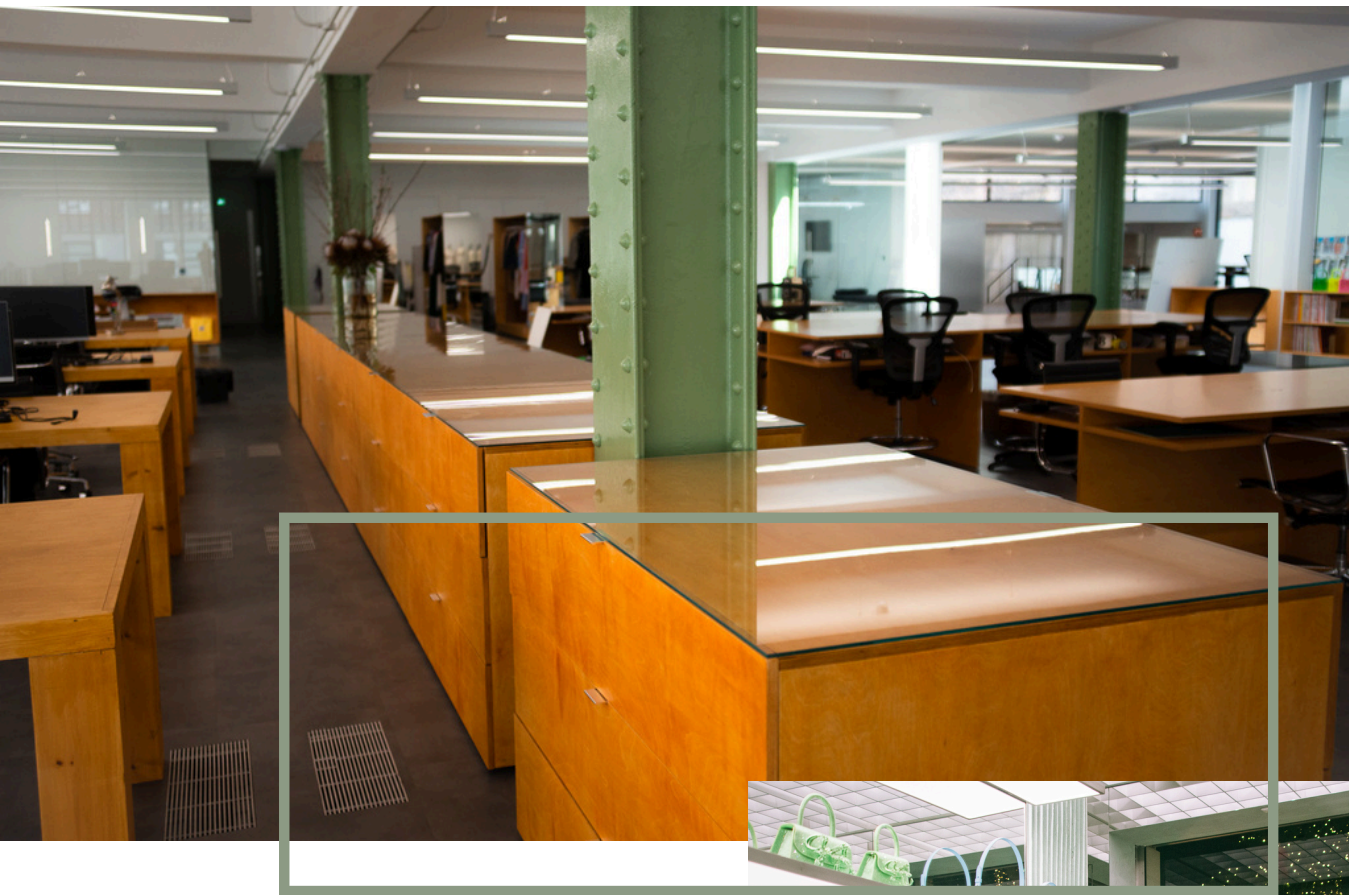
Favourite Moment

Completing the entire job was incredibly rewarding, from the office's industrial-inspired workspace to the store's luxurious, textured interiors. Seeing it all come together, with the contrasting elements working harmoniously, was a highlight for our team.

Challenges Faced

The most challenging aspect of this project was working on the metalwork for the store, particularly for the 'Crucifix' mirror feature and the polished steel hanging rails.





Ensuring the precision and durability of these elements, while working with different textures and materials, required meticulous planning and execution.

Final Thoughts

Being part of a thriving, well-known female clothing brand like Self-Portrait was a fantastic experience. The end result was a brilliant combination of industrial elements and high-end finishes, creating both functional and visually stunning spaces for the brand's creative team and customers. This project showcased our ability to work across diverse design languages, bringing both the Clerkenwell office and the Kings Road store to life.



NYK

Location: Canary Wharf

Timeframe: 12 weeks

Project Overview

Set on the 19th floor of a high-rise in Canary Wharf, this 12-week fit-out for an international shipping company, NYK, created a high-end reception area and office space that made an immediate impression. The standout feature was a bespoke solid surface reception desk, paired with a striking reception wall that created a dramatic entry point. From the detailed wall veneering to the fully customized library and tea points, the project was designed to balance functionality and aesthetic appeal. Despite the challenges of fabricating the complex reception desk, the final result achieved a true wow factor for all who enter the space.

Favourite Moment

Our favourite piece from this project was the bespoke reception desk. Its bold design and central position in the room make it a statement feature that sets the tone for the rest of the office.

Challenges Faced

The most challenging part of the project was the fabrication of the reception desk. Its complex shape and solid surface material required a high level of craftsmanship and attention to detail to ensure a flawless finish that matched the sleek aesthetic of the office.





Final Thoughts

This project truly transformed the 19th floor into a stunning workplace with a dramatic reception area that serves as the perfect introduction to the office. The combination of bold design choices, like the blue fluted panel and solid surface desk, with subtle, elegant details like the textured sheet metal displays and oak worktops, creates a space that is both functional and visually striking. We were proud to be part of this transformation, and the final result left a lasting impression on everyone involved.



DFS & Sofology - Nationwide Rollout

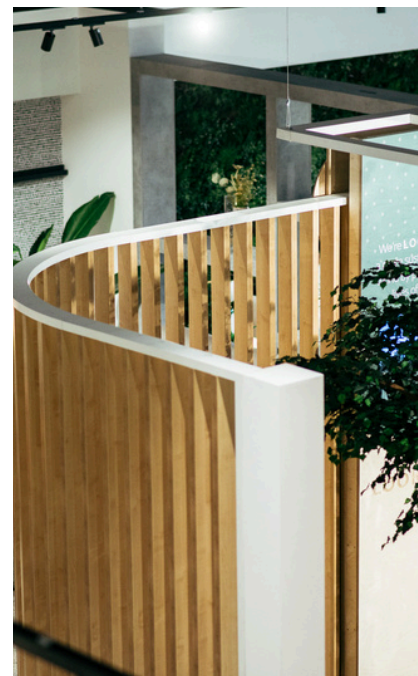
Locations: Multiple Locations
Across the UK
Timeframe: 8 weeks

Project Overview

Our work with DFS & Sofology has spanned multiple fit-outs across the UK, providing joinery solutions for the front-of-house staff offices and retail space dividers. Over the course of these projects, we have refined our manufacturing process, becoming more efficient with each fit-out. The most memorable milestone was completing our first Sofology fit-out while simultaneously setting up our new workshop, marking a significant achievement for our team. The logistical challenges of delivering to national sites on tight deadlines were a key obstacle, but the overall results have been outstanding, with each store showcasing high-quality craftsmanship and unique designs that enhance the customer experience.

Favourite Moment

One of our most memorable experiences was running the Hedge End DFS and Sofology fit outs simultaneously.





This project was particularly significant because it marked our first Sofology fit out, completed while we were still setting up our workshop. The simultaneous execution of two large projects at once was a testament to our team's dedication and adaptability.

Challenges Faced

The biggest challenge throughout these projects has been managing the logistics of deliveries and meeting the tight timeframes set for national fit-outs. Coordinating the transportation and installation of large, handmade pieces to various locations around the UK on a strict schedule required meticulous planning and execution.

Final Thoughts

After completing several successful fit-outs for DFS and Sofology, we have streamlined our manufacturing and installation processes, becoming more efficient with each project. This ongoing partnership has allowed us to showcase our high-quality craftsmanship, and the final results across multiple locations have proven to be a brilliant success. Each store we fit out continues to be a source of pride, and we look forward to delivering even more projects with the same level of excellence.



One Crown Place

Location: Broadgate, London
Timeframe: 4 Weeks

Project Overview

The One Crown Place reception area project is a personal favorite of ours, showcasing our ability to balance aesthetic design with practical functionality. We worked closely with our client to transform this space into a truly eye-catching entrance. The project involved manufacturing and installing a bespoke reception desk and a 6x14m feature wall, each meticulously designed to complement the spacious lobby. The birch ply reception desk, which mirrors the design of a ship's hull, remains a standout feature in this prominent London building. Transporting and installing the desk as a single 400kg unit presented a significant challenge, but the final result has proven timeless. Years later, we still see the desk regularly and admire how it continues to look as impressive as ever.

Favourite Moment

Our favourite part of the project was creating and manufacturing the bespoke reception desk. The design's unique concept, combined with the technical challenge of its construction and installation, made it one of the most rewarding pieces we've ever crafted.





Challenges Faced

The most challenging aspect of this project was the transportation and unloading of the reception desk. Given its 400kg weight and large size, the desk needed to be built as one whole piece and transported carefully to the site. Unloading it on the road and moving it into place was a logistical feat, but the seamless installation was worth the effort.

Final Thoughts

We still admire this project years after its completion, especially as we often pass by the pedestrian area and see the reception desk continuing to stand out as a bold, impressive feature. It's a lasting testament to the quality of our craftsmanship, and we're proud to have played a role in enhancing such a prominent building in London. The feature wall, desk, and furniture combine to create a reception area that is both elegant and functional—a space that leaves a lasting impression on everyone who enters.



Huckletree - Priory House

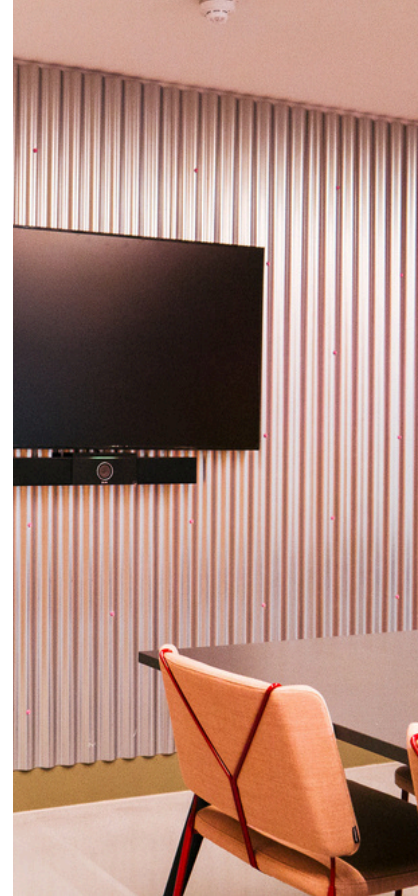
Location: Kensington, London
Timeframe: 10 Weeks

Project Overview

Huckletree's Priory House project in Kensington is an excellent example of creative joinery, and we were excited to bring some truly unique designs to life. The project involved six floors of bespoke joinery work, each packed with intricate details and standout features, from multiple tea points to a stunning barista bar and a large coworking table. A mix of creative materials, including corrugated wall cladding and Valcromat, was used throughout, allowing us to deliver a visually dynamic and functional workspace. The most memorable moment for us was installing the barista bar, which became the central feature of the ground-floor café, providing both form and function for staff and visitors. However, the installation of the 4.5-metre-long ombre glass top on the coworking table proved to be the most challenging, due to its size and delicacy, but the final result was well worth the effort.

Favourite Moment

Our favourite element of this project was undoubtedly the barista bar on the ground floor. Watching this piece come together, with its bespoke shelving and durable finishes, created an inviting space that became the heart of the building's café.





Challenges Faced

The most challenging part of the project was installing the 4.5-metre-long ombre glass top on the coworking table. Its size, weight, and delicate nature made the process complex, but our team worked meticulously to ensure the top was installed safely and securely, and the final result was a true showstopper.

Final Thoughts

We enjoyed working on a project where outside-the-box joinery ideas were brought to life. The unique materials and designs, from the corrugated cladding to the ombre glass table, allowed us to push our craftsmanship to new heights. Huckletree's Priory House fit-out became a space filled with dynamic energy and stunning joinery that seamlessly balanced function and form.



Stranger & Stranger

Location: Farringdon, London
Timeframe: 6 Weeks

Project Overview

For Stranger & Stranger, an industry-leading bottle designer and manufacturer, we were tasked with creating an office that truly reflects their vibrant and quirky brand. Although the space was smaller than some of our other projects, it was filled with character and challenging design elements that made the project exciting. Our main focus was on crafting bespoke industrial-rustic storage solutions that allow the client to showcase their unique work in an innovative way. One of the standout moments was the design and installation of the spinning wine bottle displays, which turned out to be a major highlight for both us and the client. However, this element was also the most challenging part of the project, as it required intricate design and engineering to ensure the bottles were secure yet able to spin seamlessly for display purposes.

Favourite Moment

Our favourite feature of this project was the spinning wine bottle displays. The innovative design and functionality of these displays perfectly complemented the creative work of the client, making it both a conversation starter and a highly practical solution for showing off their designs.



Challenges Faced

The most challenging aspect was designing the spinning wine bottle displays. These needed to function smoothly while still maintaining the aesthetic of the space, ensuring the bottles remained secure yet freely rotating. Our team worked meticulously on this element to achieve a seamless result.

Final Thoughts

Working with Stranger & Stranger was a great opportunity to bring to life a space that reflects their vibrant, urban, and quirky brand identity. The office now serves as both a creative workspace and an immersive showcase for their products, with each joinery piece thoughtfully designed to complement their work. Walking into this office feels like stepping into an extension of their brand—a unique, dynamic, and engaging environment.



Tri Centre One

Location: Swindon
Timeframe: 16 Weeks

Project Overview

For Tri Centre One in Swindon, we were tasked with a wide scope of joinery works across the building's business lounge and reception areas. This project required meticulous attention to detail due to the high-end materials used and the unique design elements, such as curved oak veneered benches and panelling, as well as bespoke seating booths and a striking reception desk. Although working around other trades towards project completion proved challenging, the final outcome was well worth the effort. One of our favourite elements was the oak panelling in the lift lobby. The seamless integration of the oak slats, combined with the attention to fire safety regulations, made it a standout feature that both we and the client were proud of.

Favourite Moment

Our favourite element of the project was the lift lobby oak panelling. The craftsmanship required to create the seamless oak veneer slats was extremely rewarding, and seeing the final product installed was a proud moment for the team.





Challenges Faced

The most challenging aspect of the project was working around other trades on site as the project neared completion. Coordinating our work with multiple teams while adhering to a strict timeline required significant planning and collaboration to ensure a smooth process and a flawless final result.

Final Thoughts

While this project required considerable effort, especially given the distance, the end result was undoubtedly worth it. The space now boasts a high-end, luxurious feel with a variety of custom joinery elements that elevate the business lounge and reception areas. Each bespoke piece contributes to the overall aesthetic, and we're proud of how everything came together to create a warm, inviting space.

Axa Healthcare

Location: Tunbridge Wells

Timeframe: 6 Weeks

Project Overview

For Axa Healthcare, we had the opportunity to transform a section of their office into a dynamic and functional workspace. The project included the creation of a stunning Agora seating area, a contemporary reception desk, an IT bar, and private seating booths. This space was designed to foster collaboration, with a focus on both aesthetics and functionality. Our favourite part of the project was undoubtedly the Agora seating, which was built like an amphitheatre, offering a creative and engaging space for staff presentations and team gatherings. The design allowed for a tiered seating structure that maximized the use of space while also serving as a focal point for the office. Working closely with subcontractors, we collaborated to achieve the proper layout and levels of the Agora seating, ensuring a smooth and successful build. The final result was a versatile, modern space that blended style and practicality.

Favourite Moment

Our favourite moment of the project was creating the Agora seating area, designed like an amphitheatre. Seeing the different levels take shape, and how the space evolved into a modern, multi-functional area for staff presentations, was a standout part of the project. The design made the room feel more dynamic and flexible, transforming it into a hub for collaboration and communication.





Challenges Faced

There were no significant challenges on this project, but the most complex part was the collaboration with subcontractors for setting out the different levels of the Agora seating. Ensuring that the tiers were correctly aligned and that the seating area maintained its visual and structural integrity was key to the success of the project.

Final Thoughts

Watching the Agora seating area come to life was an incredible experience. The space has a modern, innovative design that aligns with Axa Healthcare's vision for a collaborative and versatile workspace. The combination of the reception desk, IT bar, Agora seating, and seating booths created a well-rounded environment that is both practical and visually appealing. It was a pleasure to work on this project and witness the transformation of the space into something truly special.



Harbert

Location: New Bond Street,
London Timeframe: 8 Weeks

Project Overview

For Harbert Management Corporation, we delivered a stunning office fit-out at their New Bond Street location in London, transforming the space into a high-end, sleek, and sophisticated working environment. This project included a custom-designed reception desk, a functional tea point, an impressive AV wall, elegant oak panelling, and luxurious executive offices. The result was a high-end finish that perfectly complemented the prestigious location. Our favourite aspect of the project was the installation of the oak panelling and AV wall. These elements provided a visually striking and polished look, elevating the space with a sense of warmth and professionalism. The oak panelling was incredibly effective in creating an atmosphere of understated elegance, while the AV wall provided a modern focal point for the office's collaborative and presentation spaces. One of the main challenges we encountered during this project was restricted access. New Bond Street is a busy, exclusive area, and getting the necessary joinery on-site required careful planning and coordination to ensure smooth installation without disrupting other trades or tenants in the building.



favourite Moment

Our favourite moment in this project was the installation of the oak panelling and AV wall. These elements brought the space to life, offering a striking yet subtle finish that tied together the entire office. The AV wall was particularly effective, providing a sleek, high-tech solution while seamlessly integrating into the luxurious design of the office.

Challenges Faced

The biggest challenge we faced on this project was restricted access due to the location and layout of the building. Delivering and installing large pieces of joinery required careful logistical planning, but with thorough coordination and collaboration with other trades on-site, we were able to overcome these challenges and complete the project to our high standards.

Final Thoughts

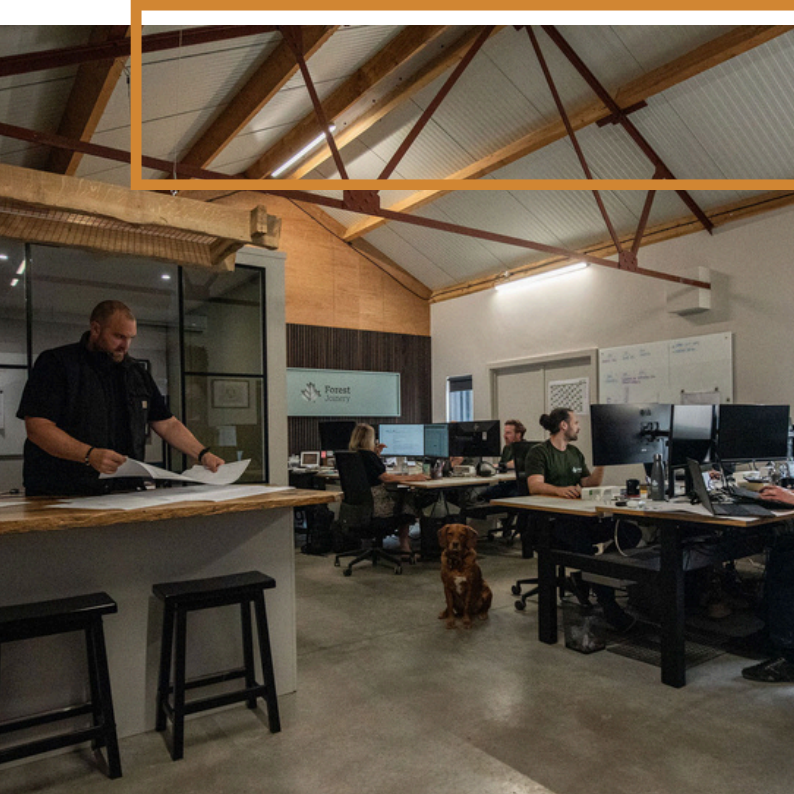
This project was a pleasure to work on, and the result was a truly high-end finish that we are incredibly proud of. The combination of the reception desk, tea point, AV wall, and oak panelling, along with the bespoke joinery in the executive offices, created a luxurious and functional office space. Despite the challenges posed by restricted access, the final product exceeded expectations and perfectly matched the client's vision for a prestigious office in a prime location.



About Us

From a humble beginning with just one craftsman and a reputation built purely on word-of-mouth, Forest Joinery has grown beyond what we ever imagined. Today, we operate out of a 5,000-square-foot workshop in Essex, employing a skilled team of over a dozen professionals, each dedicated to the same high standards we set from day one.

Founder Olly started his journey nearly twenty years ago, driven by a passion for creating beautifully bespoke joinery pieces. His commitment to quality and artistry remains at the heart of Forest Joinery, inspiring a team that shares his meticulous attention to detail and pride in every project. Our core values—exceptional craftsmanship, dedication, and integrity—are reflected in everything we do.



20 years' worth of experience in the industry

Our office and workshop are located in Epping, and we warmly invite clients to visit, meet our trusted team, explore our range of samples, and see our talented joiners in action. We take pride in showcasing both our thoughtfully designed office space and our efficient, productive workshop, giving clients a true sense of our capabilities and craftsmanship. With a dedicated team of skilled joiners and supportive office staff, Forest Joinery continues to expand its services and build a brand that stands the test of time—just like the quality of our bespoke products.

Meet The Team



Carmil Bejan
CAD Draughtsman



Charlie Heatley
CNC Manager



Chloe March - Brown
Operations Manager



Danny Hassan
Joiner



Harry Cook
Joiner



James Cook
Joiner



Joshua Shepherd
Joiner



Kelly Aspinall
Joiner



Lee Smith
Lead Joiner



Lewis King
Workshop Manager



Lyndon Franklin
Joiner



Mitchell Denning
Project Director



Nicola McCann
Accounts Manager



Oliver Stokes
Founder & CEO



Paul Heney
Project & CNC Manager



Simon Harwood
Joiner



LET'S GET IN TOUCH

@FORESTJOINERY



Forest Joinery Ltd, Sumner's Farm, Epping Road,
Epping Green, Essex CM16 6PX

01992573765
info@forestjoinery.uk

forestjoinery.uk