



Forest Joinery

Portfolio

Index



03 **Services**

04 **Design**

05 **Project Index**

25 **About Us**

Services

**We design, manufacture
& install bespoke joinery
for projects throughout
the UK**

With over 19 years' worth of experience in the industry, it's no surprise we are our client's preferred joinery supplier to manage high-end commercial projects across the UK. With a wide variety of projects under our belt, top-of-the-range machinery, and a trusted, dedicated team, we are fully equipped to take on anything our clients throw our way.

We work closely with many well-established fit-out companies, interior designers & project managers, and only look to build long-lasting relationships, becoming their most trusted supplier providing all their joinery needs.

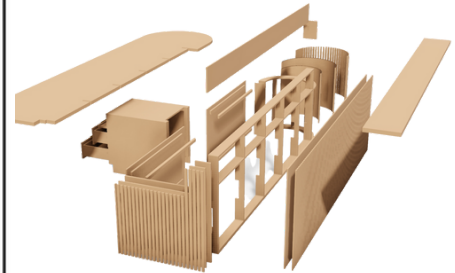
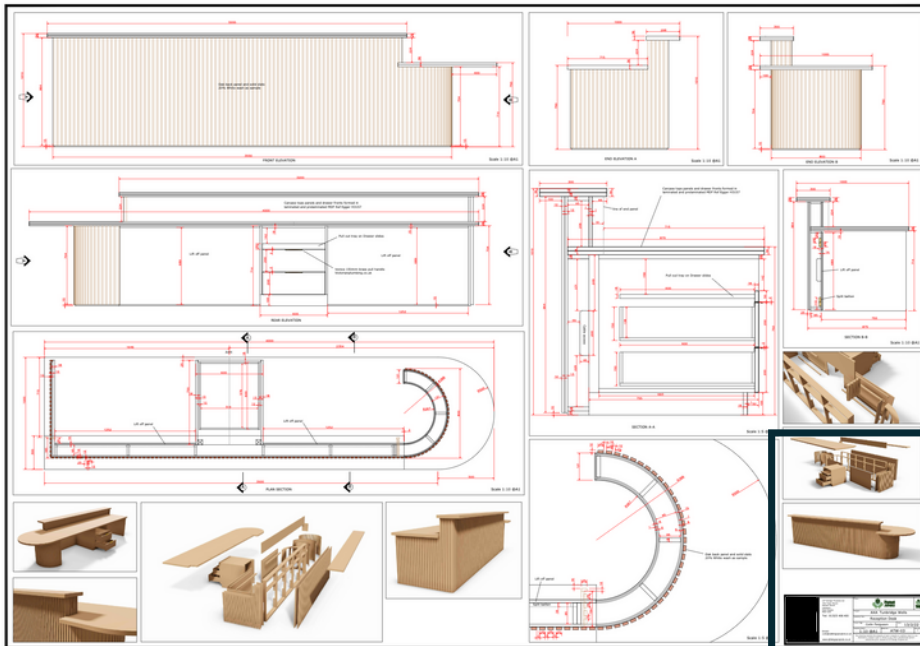


We take pride in taking your ideas and crafting them with precision, detail & passion, taking you from concept to completion, smoothly & effortlessly. From workspace tea points, feature walls, banquette seating, and more, we allow your commercial space to evolve into the relevant & required fit for your business.

And our ability to provide innovative designs and forward-thinking solutions is exactly what has allowed Forest Joinery to grow & expand in unimaginable ways and secure us a seat at the top with the biggest names in the industry.

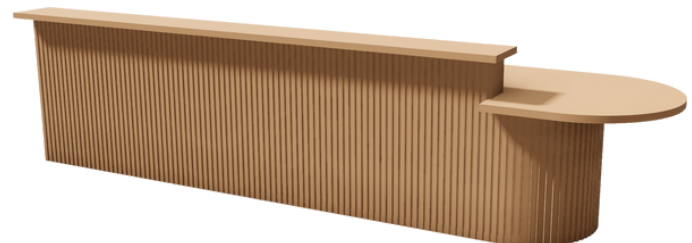


Design

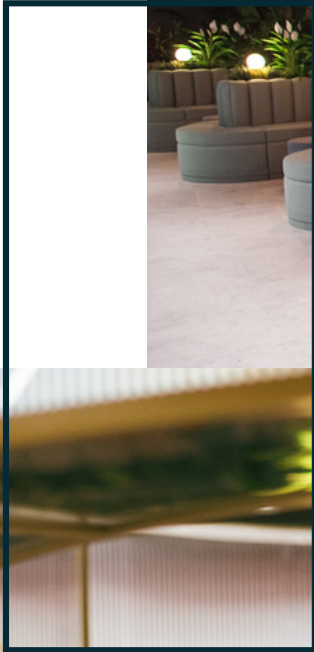


As a company, we are committed to making the everyday exceptional—for our clients and especially when it comes to design. With some of the best designers in the industry, we develop shop drawings and work closely with our client to be creative in design development solutions along with visualisations and concepts to bring your space to life and achieve your business ambitions if required.

We are aware of the latest trends and commercial designs, our approach to problem solving is based on decades of experience. We take on all our client's requests & desires, but also perfectly balance this with guiding and directing our clients in the best direction to reach their goals effortlessly & seamlessly. Together, we are focused on delivering inspiring and empowering commercial fit-out projects, all the while ensuring you feel cared for and confident.



Project Index

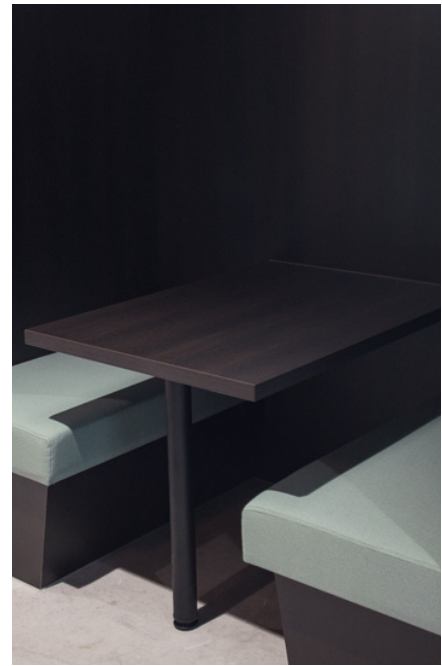
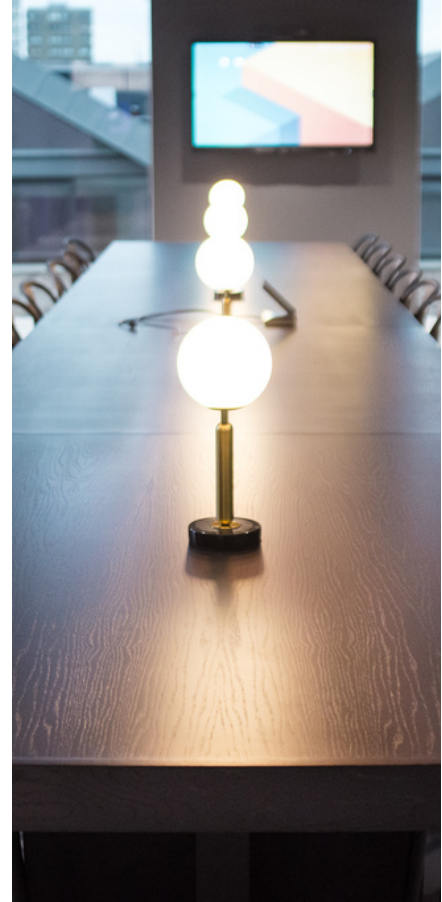


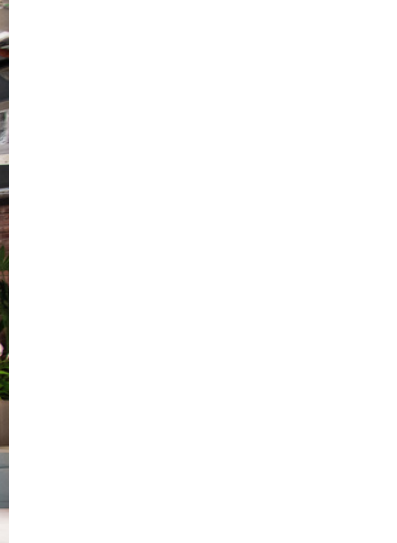
06	Planet	18	One Crown Place
08	Hanover	20	Monument
10	Self Portrait	21	UEL-Pumphouse
12	NYK	22	Socar
14	Sofology	23	Zonin Wines
16	DFS	24	Axel Arigato

Planet

Set on the 4th floor of an office building just across the road from Tottenham Court Station, this office fit out was a big one. Starting with the bar area we manufactured for the client that sits just in front of the main entrance of their floor, a large span oval bar area, finished with curved layered solid surface, sitting underneath gold powder coated metal framework fitted with toughened glass and twin wall reeded Perspex to create somewhat of a floating halo around the entire area, bespoke cabinets create great storage space within the whole bar, once you get past this first installation, you can take a seat somewhere on our wall to wall serpentine seating area, fully upholstered to create a flowing colour scheme that falls from the forest-esque planter design, with separate lighting within every booth.

In the next area of the floor, we supplied three main items, first is the bleacher seating, all in dark stained oak, with built steps and handrail to make access easier and safe, sat against the electric blue tiles and company logo large on the wall. Running parallel with the seating is a mammoth boardroom table, following the same design, with cross frame oak pedestals supporting its immense weight.





To make the most of the wall space in between windows, we supplied and fitted several focus booth areas with single desk spaces that span the width of the room. floor to ceiling panelling in the same dark oak applied elsewhere creates a great contrast to the floods of natural light that beam through the windows, bringing a calming balance to the area.

Rustic scaffold board shelving provides some what of a walk way into the main office area, following the walls, wrapping around, through the door way, until it turns a corner and reaches the end of the room, with a perfect gap for the interactive monitors hung on the wall.

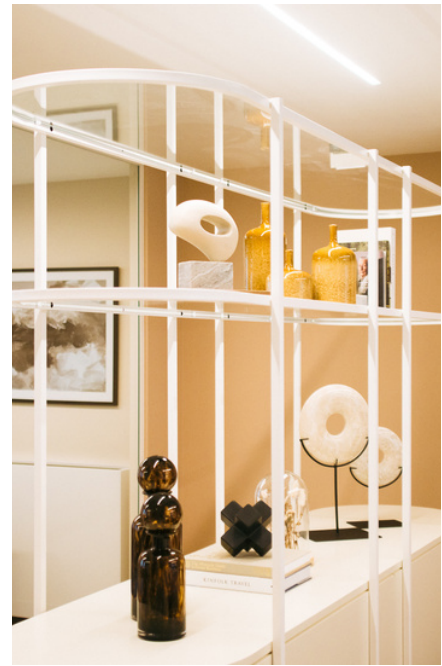
Throughout the rest of the floor we supplied many wall mounted desks for quiet rooms that people can use for private meetings and minimising distractions.

Hanover

Situated in the heart of Mayfair, Hanover Street is right in the centre of the hustle and bustle of city life, the contrast to the manic rush of city life this office floor provides is incredible. Straight away, walking through the door not reception, you are met with a Cork panelling across the far wall and ceiling, providing an immediately noticeable softness, calming the myriad of senses you have just gone through walking the streets of London.

Through past the reception area we installed a full height feature room metal divider, bespoke oval metal frame powder coated in a neutral colour, with toughened glass shelves for display items that the client wants to be seen, all surrounding a manufactured timber base sprayed to match the box section.

Hidden in the furthest corner of the office floor, this quaint tea point. Following the colour scheme with the cabinetry, all the doors are finished in the same neutral colour found across the rest of the project, with the bottom cabinets using fine stainless steel pull handles and the top wall cabinets being push to open. Underneath the wall units we provided a floating oak storage space that compliments everything nicely while adding extra room for cups and mugs without taking up more of the footprint. Finishing this tea point off is the solid surface wrap around worktop and up-stand, with a complete flip of the colour wheel making it really pop in the room.



If staff want to take a seat for a cosy coffee, the booth seating we built is perfect, secluded enough to feel intimate whilst being completely out in the open so not to feel alone, upholstered with premium materials making comfort the selling point on this one.



Self Portrait - Head Office

A modern take on an industrial feel for this office fit out for a high-end fashion designer at their new base in London.

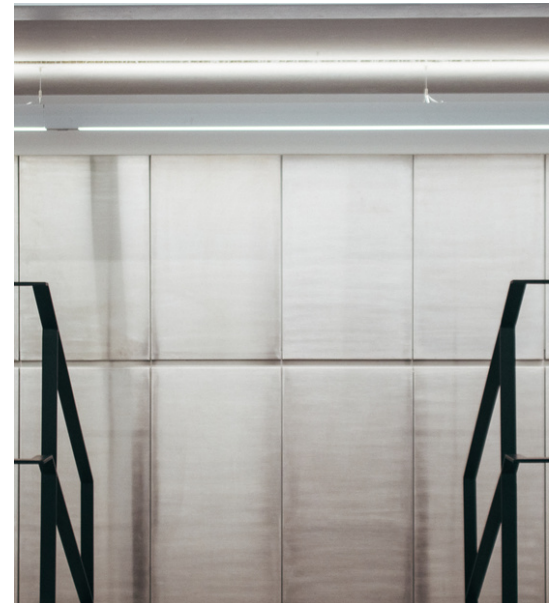
A big fit out right from the start, this one was a great end-product.

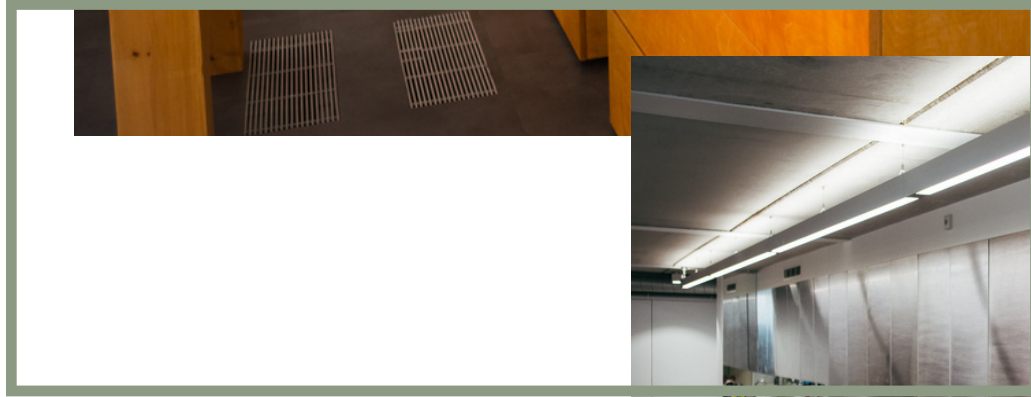
A long run of double-sided birch ply drawer packs features in the middle of the office floor, with huge amounts of storage space with the intent for the design teams to store samples, mood boards and their upcoming designs.

Floating birch ply cabinets with mirrored backs to both meeting rooms to display the finished handbags and awards, with no cabinetry the same. All the birch on this project was hand stained and polished to a unique colour.

A full width tea point finished in brushed stainless steel with handleless details and mirrored backsplash, was a great wow factor in this office for the staff to enjoy their break times. Two floor to ceiling backlit mirrors for the models to showcase to the client their upcoming seasons designs.

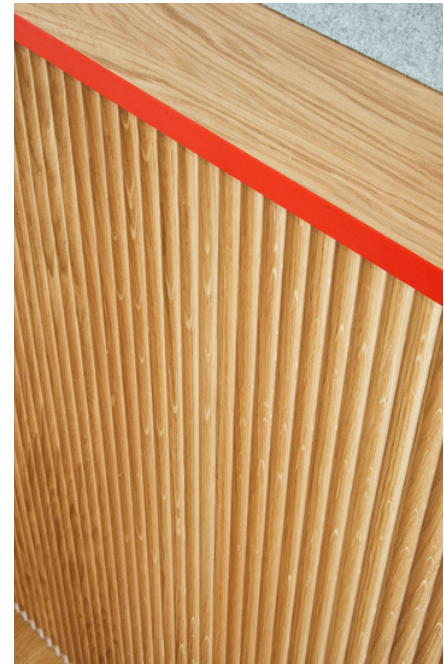
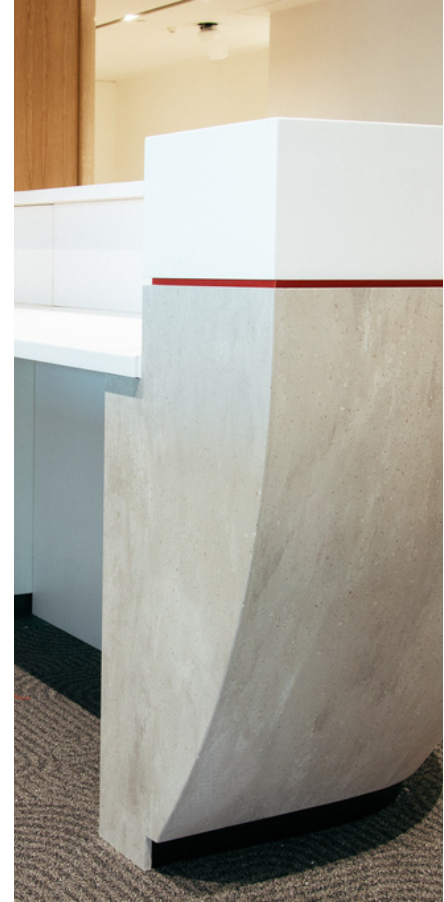
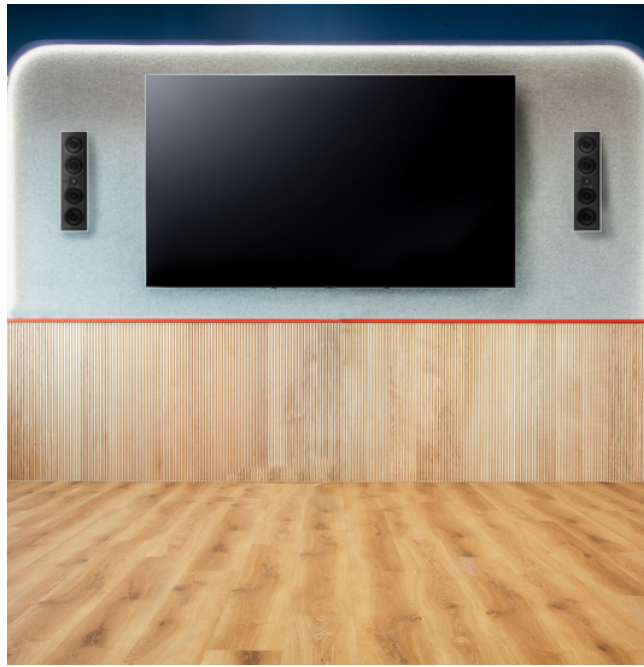
A lot of time and effort put into getting everything perfect, from the inset drawer handles to keep a flush finish, to integrated stainless sinks in the worktops for a seamless finish. The result of this package was incredible, a brilliant design and a great build.





NYK

Leaving the lift on the 19th floor of a high rise in Canary Wharf, you walk straight into the reception area we manufactured for this international shipping company. The very first things you see are our Solid surface reception desk sat right in front of our large display and storage unit. A bright blue fluted panel with their signage mounted on top takes your eye straight to the centre of the room, with crittall effect glass either side of the display, the natural light can flood in to keep the space bright and airy. As you come around the unit, the reverse side is used as a TV unit, this ties in well with the seating area position behind the reception desk. On either end of the seating we fitted displays inside wall cavities to show off realistic models of their ships. The back side of the displays are finished in a textured sheet metal to mimic that of some ship parts. The next room we come to is a small service kitchen, finished in all white across two sides of the room, integrated appliances and instant hot taps were installed to complete. Following along the corridor we arrive at the 'Library' a room in which we fitted a full run of desk worktops in oak with a red edge, supported by narrow black upright to create an almost invisible effect, with sections of the worktops separated by glass dividers in black metal frames. As we walk into the very next two rooms, nearly identical in design, white units sit along three of the walls to create the horseshoe shaped desk space. Perfect for some standing work or collaborating with colleagues.





Our final part of this office floor was the main tea point area, a large area, consisting of a media wall at one end, with our fluted oak panelling being used a feature under the TV and speakers.

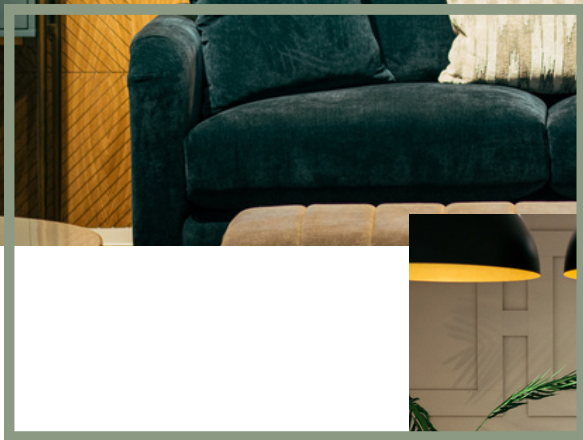
Along one side of the room spans a laptop bar with a view of the Thames from 19 floors, as with the recurring theme across the floor oak and red are very present at all times.

The last piece of the floor is the tea point and island, both with solid surface worktops, the tea point finished in a grey for the tall units and wall units. With oak finishing the bottom layer and island to match.

Sofology - Nationwide

After having completed two joinery packages for a well-established nationwide furniture supplier in 2021. We have performed another 5 stores on a role out basis with our client throughout the UK. Providing all the joinery requirements on their shop floors to separate the unique room sets throughout the branches. After having successfully completed the Orpington branch, we were kindly asked by our client to carry out the same project for the New Malden store. Since then, we have been working closely with our client to deliver several shop fittings for known suppliers across the UK and are proud that our high-quality products, professional craftsmanship and exceptional work ethic secured further projects.

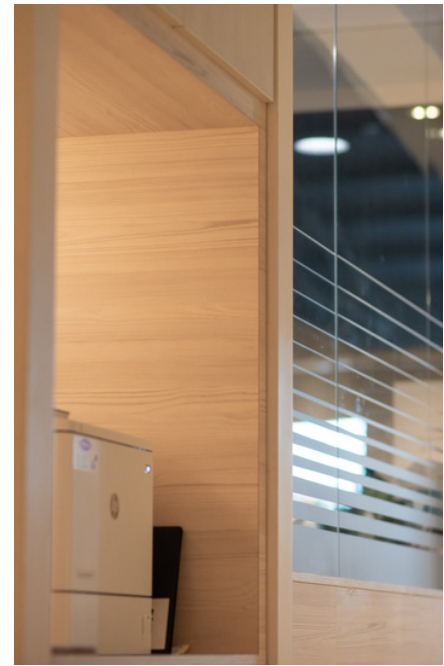




DFS - Nationwide

Another well-known furniture supplier appointed us to provide all their joinery requirements throughout their many stores in the UK. A happy client who keeps coming back for our high-quality joinery products and seamless project management. We have now successfully completed stores in Norwich, Preston, Chester, Hedge End, Milton Keynes, Warrington, Aintree, Sterling & Bolton, and the list keeps expanding.

With similar design plans and layouts, we have become so accustomed to this project and on our way to being able to produce these products with our eyes closed!



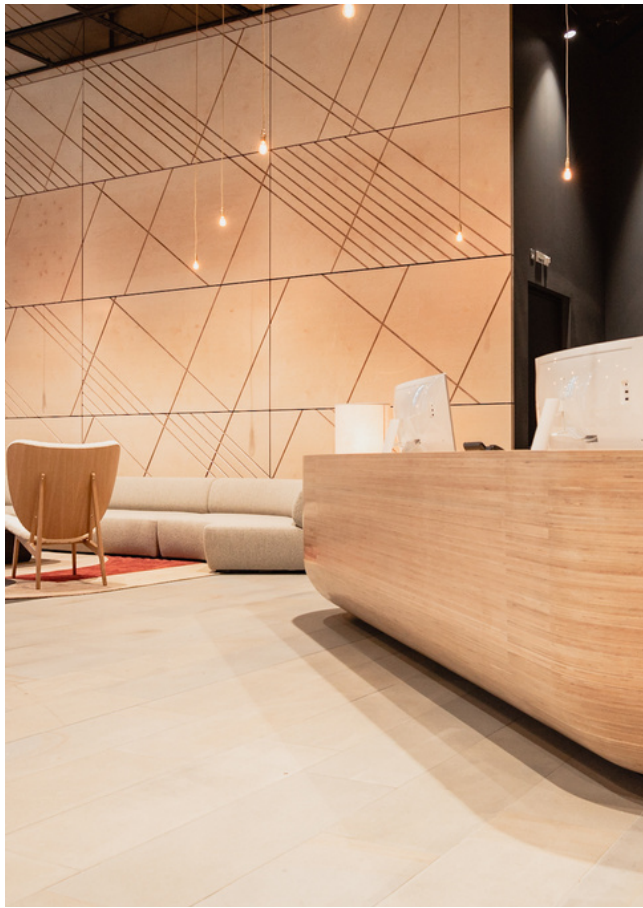


One Crown Place

This project is a personal favourite of ours. We worked closely with our client throughout and paid close attention to detail as always.

Watching this space transform from concept, design, manufacture to installation, was truly incredible to see. The project saw us creating a large 6x14m feature wall, with a CNC geometric pattern to really bring itself into the spacious lobby.

Alongside our wall, sits a bespoke desk weighing in at 400kg, built and installed for the reception staff. Built in the style of a ship hull this birch ply desk has that eye catching feature, incorporating all the buildings services and access buttons like speed gates was all taken into consideration through the design process. All of this is accompanied with an array of complimenting seating and coffee tables to pull together the room in a warm, inviting manner. It was incredible to participate in providing a unique design in one of London's most eye-catching buildings.





Monument

Sitting high up in the Monument building, we were tasked with providing several spaces within this floor.

As you walk through the front door, you are met with a custom finished reception desk in micro cement, situated alone in front of the room divider, facing one of our fitted storage spaces, finished in matte black, almost appearing as a mere shadow in the room, just fading into the wall.

An open plan tea point with island is just around the corner, the glass doors match the fluted curved ends of the island in design, with a green scheme throughout, separating its style from the rest of the office. Both worktops are finished in Solid Surface material, plus a full height up-stand connecting the worktop to the wall units on the tea point.

Towards the back of the office, in a separate space, we installed another fitted storage system, finished in the same matte black, but across the entire wall this time, provide ample room for storage within the office.

The final pieces in this offices puzzle were the toilets, completely fitted out with oak wall and IPS panelling.

Furthermore we installed new vanity units in the same finish along with wall to wall mirrors above with a halo lighting. All tied together with handmade Solid Surface trough sinks with integrated bin shoots.



UEL - Pump House

Recently the University of East London has made some investments into its space to create more places for its students to live, study and thrive. One of these places is the UEL Pump House, a cafe/bar in the heart of campus to provide a relaxing spot for students to gather, unwind and find their productivity. We were lucky enough to be a part of this project and provide a café bar area for staff and students on campus. A rustic hit and miss feature wall along the front edge of the bar was a great touch to bring the orange and yellow tones from the walls into the bar seamlessly, alongside the monochromatic solid surfaces and cabinet combination, as the rest of the room follows towards the rear walls. The whole café bar is almost framed as an art piece sitting directly next to the large whale and East London mural. A well thought out room, using very cleverly the natural depth to really bring it all together as one. A perfect project to be such a part of!



SOCAR

The first thing that pops into your field of vision as the elevator door opens is our slat wall containing the office company sign, a perfect addition to the foyer to provide a great first impression for anybody visiting. We provided the sign along with columns that it sits perfectly in. As you walk into the main office, separating the board room from the rest of the area, along with the glass wall, is another run of our black columns, adding a little extra depth to the room.

Just passed the board room, is our tea point and island, with all integrated appliances, including a tall fridge with an adjoining full length shelving unit.

All navy doors and panels for the tea point and grey for the island both finished with laminate marble effect worktops, along with some oak shelving to create a connection to the flooring installed.



Zonin Wines

A 2nd floor office in Battersea, recently remodelled for a wine company, over the span of the project we provided a stunning kitchen island with integrated wine coolers and hanging wine glass storage system lit with a built in LED lighting track, for the client to hold wine tastings.

Along the corridor we step into a glass fronted meeting room, in which we built a bespoke backlit wine bottle display with credenza style for extra room if required, to pair with this we also installed several wall mounted wine racks to showcase the wines this brand produces.

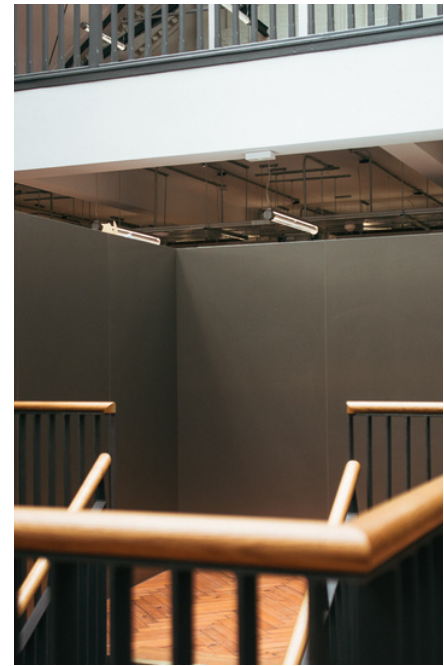
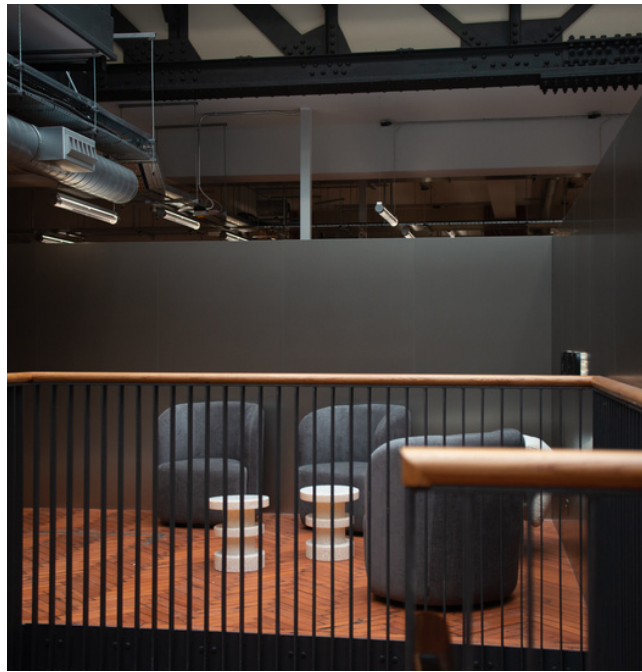
All in all a fantastic build with a great end result.



Axel Arigato

Hidden in an old army drill hall in the heart of the city, this project was fantastic once finished, tasked with providing a jaw dropping entrance into the building, we manufactured a full horseshoe self standing brushed steel wall, extremely difficult to work with and keep in perfect condition, we carefully cut and finished every board to size in our workshop before transporting it all to site, where we had constructed an inner wall to support our finished boards which acted as a fascia to provide the desired effect in the room.

Downstairs we made some bench seating in a breathtaking black wood grain, wrapping around the back walls of the kitchen area, with built in plug sockets for easy access, the black keeps with the simple yet classy aesthetic of the rest of the office, finishing it off perfectly.



About Us

From starting out with one man and working solely from word-of-mouth recommendations - to covering 5,000 square foot with our premises in Essex and employing over a dozen staff - it is fair to say we have grown in ways we didn't think were possible.

Olly began his joinery journey nearly two decades ago out of sheer love for creating beautifully unique bespoke joinery pieces, and he has kept that same mindset running throughout the ever-growing team at Forest Joinery. Ensuring staff have the same attention to detail, high-quality craftsmanship & passion for the trade, reflecting our company's ethics & values, always.



19 years' worth of experience in the industry

Our office & workshop are based in Epping, where we highly encourage clients to stop by, meet our trusted team, view our samples, and witness our talented joiners hard at work. We love to showcase our office design & build, as well as our effective and productive workshop space, allowing our clients to get a feel of what we really are capable of.

And now with a team of 14 dedicated joiners and caring office staff, Forest joinery can expand its services and grow a brand that is long-lasting... just like our products!





LET'S GET IN TOUCH

@FORESTJOINERY



Forest Joinery Ltd, Sumner's Farm, Epping Road,
Epping Green, Essex CM16 6PX

01992573765
info@forestjoinery.uk